

Inflatable Tents & Hi-Alt Habitats

Create Insulated
Shelter in 20 Minutes

Make In India Product

**-15 - +60 Deg Operation.
12- 240 SqM Insulated**

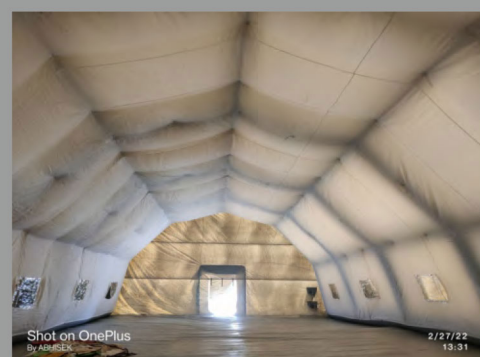
Fast deployable under 30 Min in remote regions.

Modular Shelters, 30-36 units can be easily
transportable on ALS one vehicles.

16-20 Units can be underslung by Hepter.

Can be used as single unit or combined in a modular
fashion or with ISO Containers / flat Pack units for
various types of facilities.

Used for Troops / Office/ Command Shelter, Staff
accommodation, Equipment Storage, Repair Shed etc



S No	Item Name	Specs
1	Insulated Air-beam Inflatable Tent	Inflatable Air- Beam based Insulated Tent
2	Inflated Vestibule / Corridor passage for Entry	Inflatable Air- Beam based Vestibule Tunnel
3	Inner Floor Area, Modular Expandable	60 Sq M
4	Tent Outer Width	6900 mm
5	Tent Outer Length	10900 mm
6	Tent Outer Height	3800 mm
7	Operating Temperature of tent	-20 to +50 Degree Centigrade.
8	Snow load Of Tent	> 15
9	Wind speed Resistance	80-100
10	Diameter of Air-beam for Tent frame	> 450
11	Tent Air-Beam Frame material	900-1100 UV Stabilized Dtex Polyester fabric
12	Flame Resistance	limited combustible (Flame retardant) M2 class
13	Shape of Tent Air Beam Frame	Modular Dome Type / Tunnel Type structure
14	Tent Outer Cover Stitching	Heat / RF welded for outer layer
15	Tent Outer Cover UV Stabilized Dtex Polyester fabric thickness	450-630 GSM
16	Number of Insulating layer	> = 1
17	Insulating Layer material	>5 oz/sq yd Nylon fabriq (Parachute Cloth)
18	Number Of Window	3 each side total 6
19	Window Dimension	400 x 400 min
20	Window Material	See Through with Mosquito Net
21	Door Dimension	1500 x 2200 mm
22	Number Of Door	2 per module (Front & Rear)
23	Door Material UV Stabilized Dtex Polyester fabric	Zipper Closable Door
24	Inner Vestibule Dimension	2500 H x 2500 W x 2000L
25	Diameter of Pneumo Air beam-frame for Vestibule	> 250 mm
26	Vestibule Air- Beam Material	630-900 GSM UV Stab Dtex Polyester fabric
27	Shape of Tent Air Beam Frame	Rectangular / Square Tunnel
28	Outer layer Material Of vestibule	> 450 GSM UV Stabilized Dtex Polyester fabric
29	Number of Guy wires with adequate rating for wind speed	> 8
30	Guy wire anchor foundation	Angled MS Ground Anchor for frozen ground